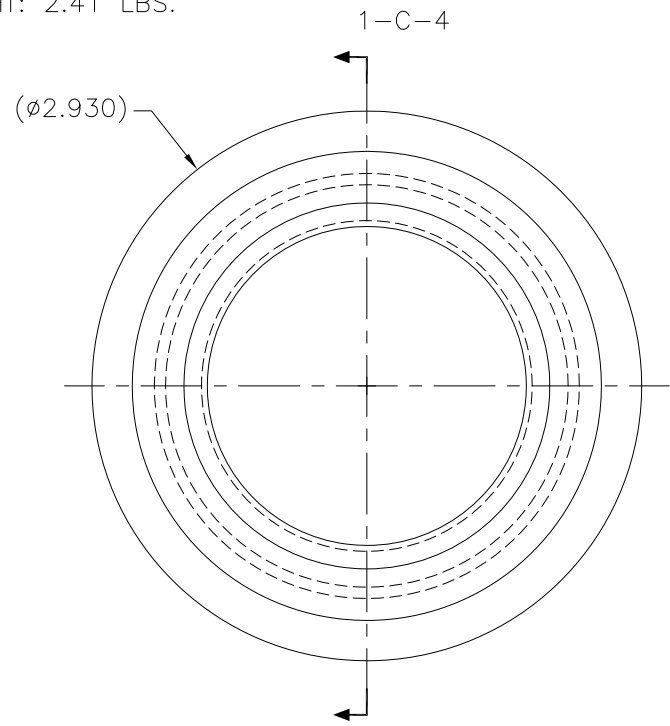


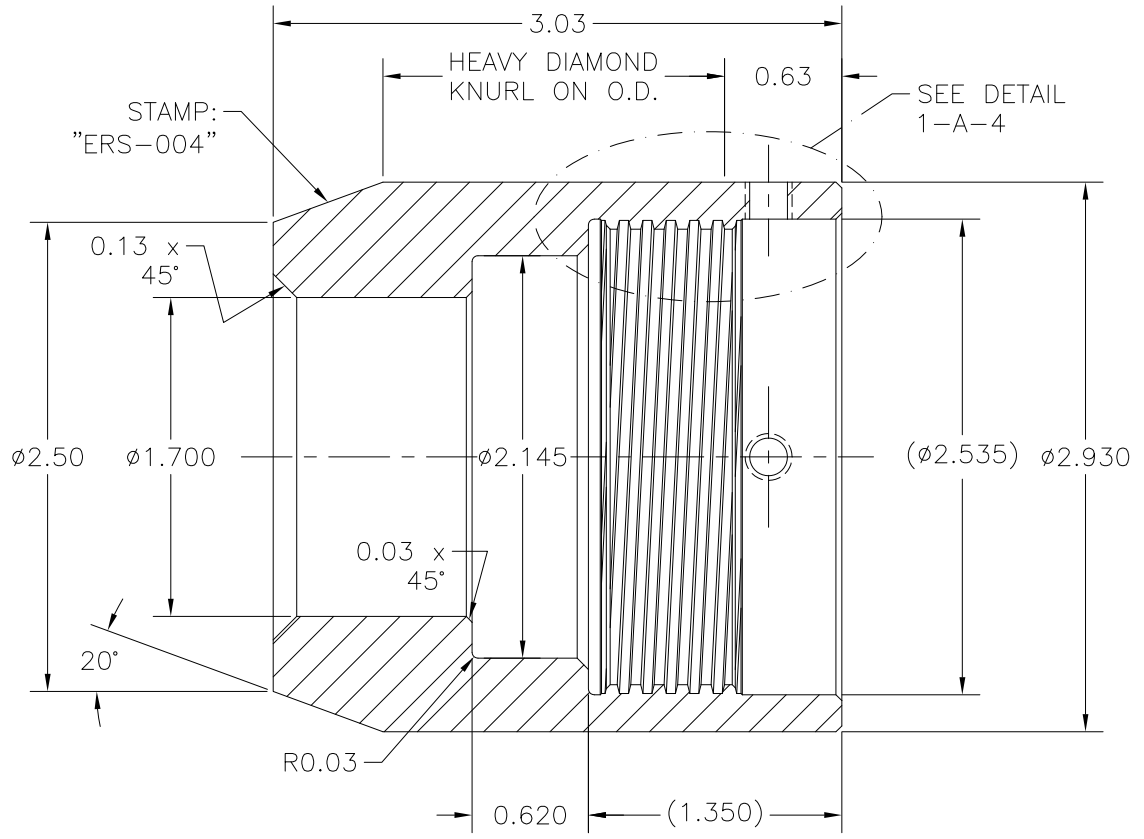
NOTES:

1. MATERIAL: BAR, 4130/4140/4142, $\phi 2.930 \times 3.030$ LG.
2. HEAT TREAT: COMMERCIAL HT. (RC 28-34)
3. SURFACE TREATMENT: AEROCOTE OR EQ.
4. THREAD TRUNCATION TAPERED SMOOTHLY AT BOTH ENDS.
5. WEIGHT: 2.41 LBS.

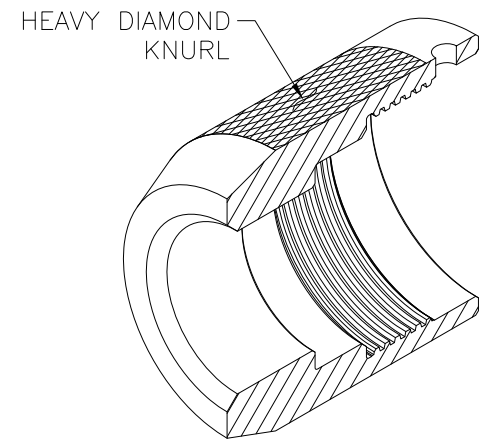
REVISIONS				
NO	DESCRIPTION	DATE	BY	APR/DATE
0	ISSUED FOR MANUFACTURE	05/12/10		



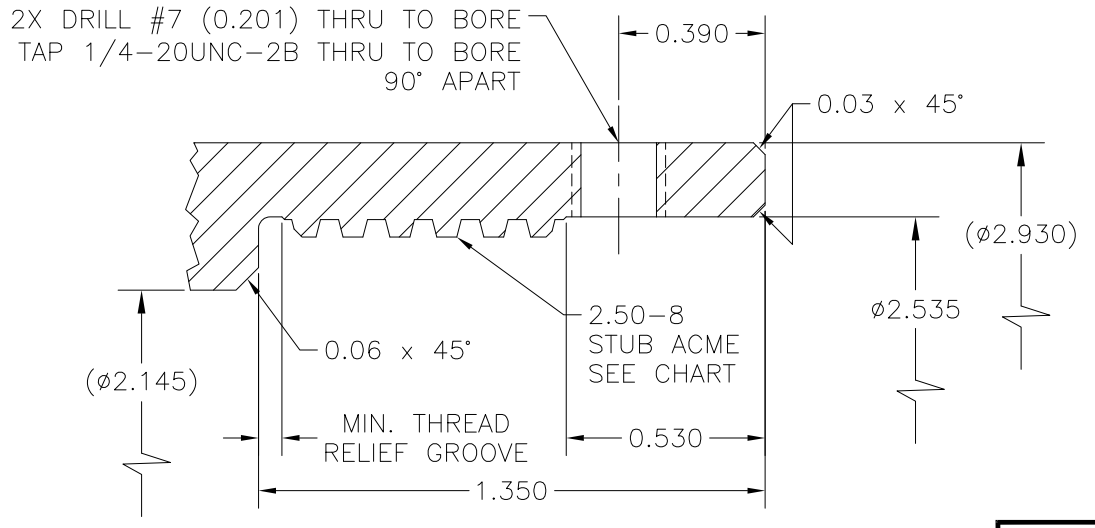
VIEW 1-C-7
LOWER SINKER BAR NUT



SECTION 1-C-4
REF. 1-D-7



PICTORIAL 1-C-2
LOWER SINKER BAR NUT
N.T.S.



DETAIL 1-A-4
REF. 1-D-3

2.50-8 STUB ACME THREAD INTERNAL	
MAJOR DIAMETER, MIN.	- 2.520
MAJOR DIAMETER, MAX.	- 2.530
PITCH DIAMETER, MIN.	- 2.463
PITCH DIAMETER, MAX.	- 2.473
MINOR DIAMETER, MIN.	- 2.425
MINOR DIAMETER, MAX.	- 2.431
BASIC THREAD HEIGHT	- 0.038
BASIC WIDTH OF CREST	- 0.053
THREAD PITCH	- 0.125

TOLERANCES: UNLESS OTHERWISE SPECIFIED 0.X ± 0.030 0.XX ± 0.010 0.XXX ± 0.005 ANGLES ± 1/2° BREAK EDGES 0.015 x 45° MIN. FINISH $\sqrt{125}$ [0.010]A ALL DIMS ARE IN INCHES, UNLESS NOTED OTHERWISE.	PROPRIETARY NOTICE THIS DRAWING AND THE INFORMATION IT CONTAINS ARE CONSIDERED CONFIDENTIAL, AND MAY NOT BE REPRODUCED, COPIED OR USED, IN PART OR IN WHOLE, WITHOUT PRIOR WRITTEN CONSENT.	Integrated Ocean Drilling Program TEXAS A&M UNIVERSITY 1000 DISCOVERY DRIVE COLLEGE STATION, TX 77845	
		SHEET 1 OF 1 SCALE 1:2 BY KM DATE 03/30/10	TITLE LOWER SINKER BAR NUT SYSTEM ASSEMBLY 3° ERS CHECKED JCS APPROVED TP SIZE D P/N ERS-004 REV. 0